

**KUTRIMMER®**  
by IDEAL

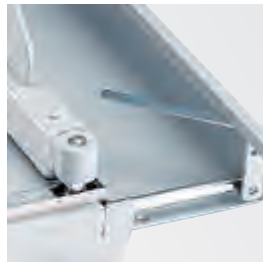
## ➔ 1071 TABLETOP TRIMMER

Solingen steel blade set may be resharpened | transparent Lexan® safety guard | solid hand clamp, independent of blade handle | precision side guides scaled in inches and metric system | lockable back gauge | front gauge is adjustable using a calibrated rotary knob with fine adjustment scale, lockable in every position | narrow-strip cutting device | fold-away paper supports on front gauge allow precise cutting of lightweight paper stocks | standard paper sizes indicated on table | all-metal construction

Dimensions (D x W x H): 28 ½ x 18 x 20 ½ inches, Shipping weight: 62 lbs.



### PAPER SUPPORTS



The fold-away paper supports on the front gauge allow precise paper alignment.

### SOLID HAND CLAMP



Variable clamping pressure can be applied with the manual hand clamping device.

### ➔ KUTRIMMER 1071

Cutting length 28 ½"  
Sheet capacity 40\*  
Table size (D x W) 30 ¾" x 20 ¼"

\* may vary due to variations in paper

Dealer:

**MBM**  
CORPORATION

3134 Industry Drive  
North Charleston, South Carolina 29418  
800-223-2508, fax: 843-552-2974  
www.mbmcorp.com

**IDEAL.MBM**  
CORPORATION

1675 Sismet Road, unit 4  
Mississauga, Ontario L4W 4K8  
800-387-2528, fax: 905-840-1114  
www.ideal-mbm.com